

LED SIGN SOFTWARE FOR USB

1. Software setup

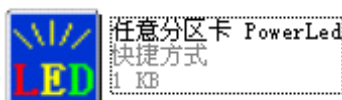
1>: Software Runtime Environment

operating system:Windows2000/XP/Vista/7.

2>: Software setup

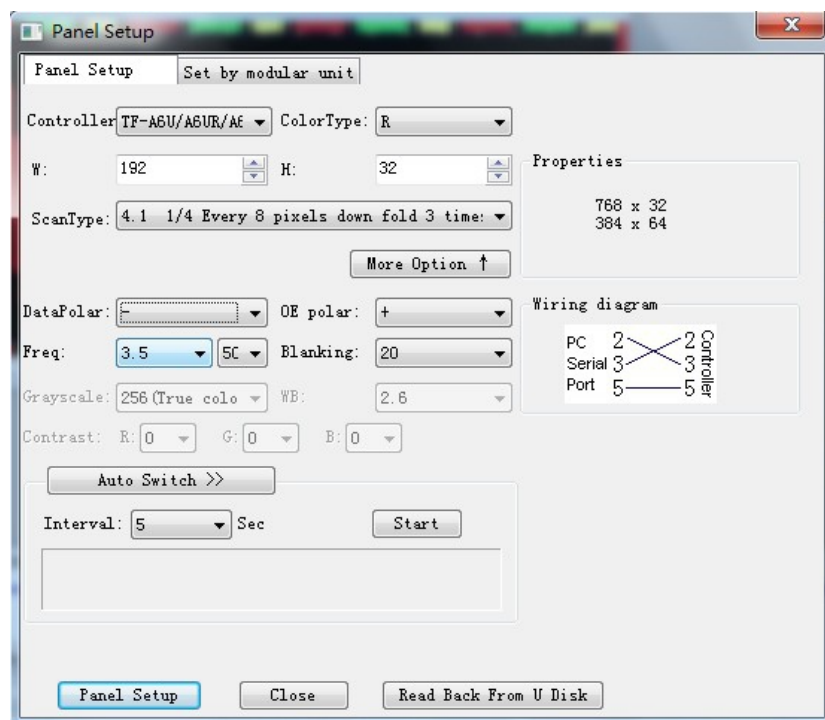
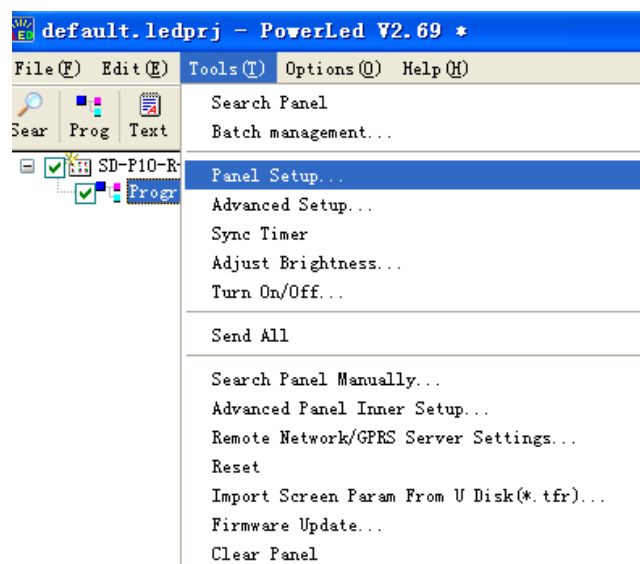
Click"PowerLed_setup.exe" on the CD-ROM to setup the application.

3>: to choose the language.



2. Software Settings

(1) Setting the led screen's parameters,the password is **168** ,please follow the pictures to set:



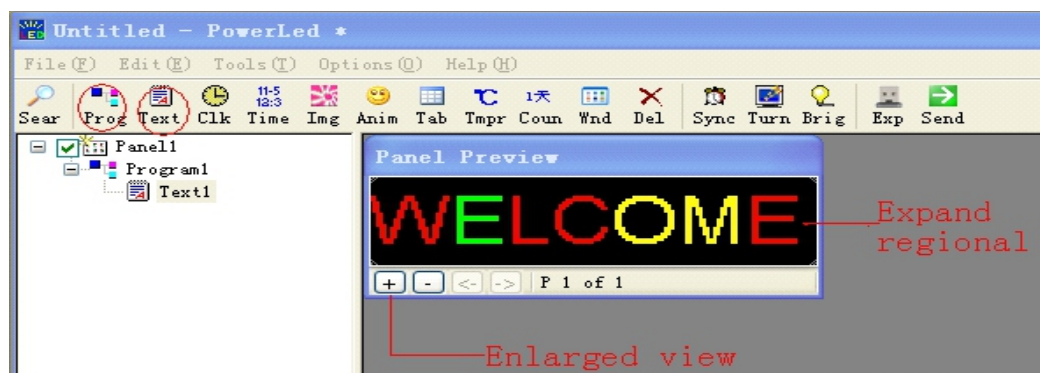
(2) After set correctly, click "setup", and exit.

3. Edit the LED Display text information:

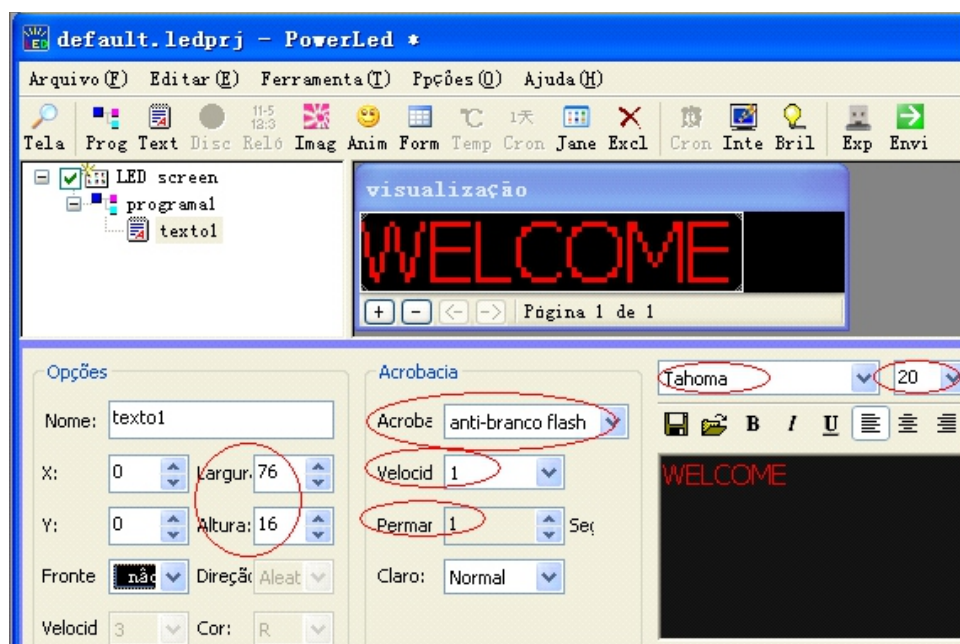
(1)To add a "Program" firstly, then "Program" add "TEXT", you can have multiple "Program" and "TEXT".



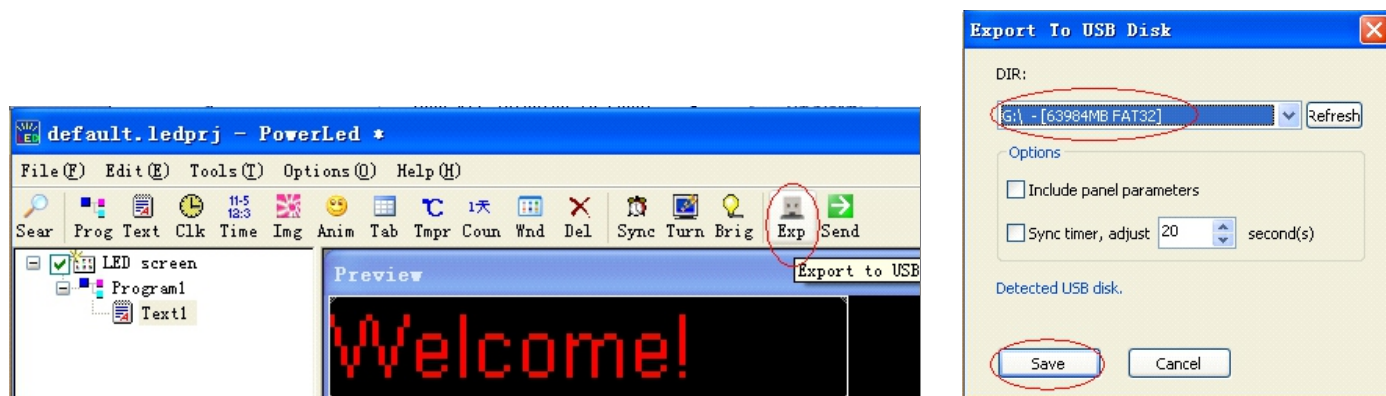
(2) In order to edit the text convenient, you can magnify the show preview window, and make the area to the largest.



(3) Input text: you can choose different font size, and word's display mode, speed, residence time, etc.



(4) After the completion of the file editor, click "Exp"(Export to USB). and send the documents to USB disk, Choose the USB-disk to save the file, press "save".



(5) Plug the USB-disk to the led screen, when the screen said: USB OK. Then you can pull out the USB-disk.